

Release Notes

BizInsight 5.5 SP3
Build 5.0.35.1 RTM3
December 15, 2014

Copyright Notice

BizNet Software, Inc makes no representations or warranties with respect to the contents of this document and specifically disclaims any implied warranties of merchantability or fitness for any particular purpose.

We welcome user comments and reserve the right to revise this publication and to make improvements or changes to the products and programs described in this publication at any time without notice.

Mailing Address:

BizNet Software, Inc.
14755 Preston Rd., Suite 800
Dallas, TX 75254

Phone:

1-888-803-5227

Web Site:

www.biznetsoftware.com

© Copyright 2014 by BizNet Software, Inc. All rights reserved.

Printed in the United States of America

No part of this publication may be reproduced in any form without the prior written consent of BizNet Software, Inc.

Trademarks

Windows and Microsoft Excel are registered trademarks of Microsoft Corp.
All other trademarks are acknowledged.

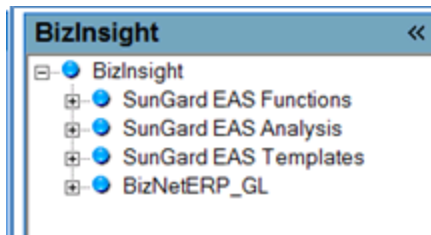
| | |
|--|-----------|
| 1. New Features | 1 |
| 1.1 Custom Content Support | 1 |
| 1.2 Installation Support for Centralized Application Settings | 1 |
| 1.3 BizProperty and Account Definition Functions Embedded in the Navigation Pane | 3 |
| 1.4 BizNet Assistant | 6 |
| 1.5 Multi-thread Support added to BizInsight and BizNet Caching Service | 8 |
| 1.6 BizNet Caching Service User Interface | 8 |
| 1.7 SQL MetaData Database Support | 9 |
| 1.8 Support for custom SQL MetaData databases | 11 |
| 2. Product Enhancements | 12 |
| 2.1 Collapsible BizInsight Navigation Pane | 12 |
| 2.2 Application Settings with Automatic Scan for Content | 13 |
| 3. Issues Resolved | 15 |
| 3.1 Unhandled exception thrown in Data Caches | 15 |
| 3.2 Expression Editor Launches in all Workbooks | 15 |
| 4. Known Issues | 16 |
| 5. SunGard EAS Content Pack Improvements | 19 |
| 5.1 Business Unit (BU) Function Optimization | 19 |
| 5.2 Cost Allocation (CA) Function Optimization | 19 |
| 5.3 Location (LOC) Function Improvement | 19 |
| 5.4 Analysis Sets Updated to TRIM Return Values | 19 |
| 5.5 Drilldown Performance Improvements | 19 |
| 5.6 New Source Code Analysis Sets | 19 |

1. New Features

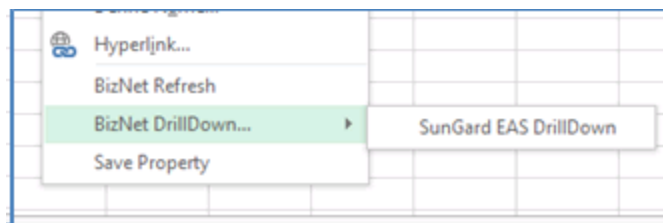
1.1 Custom Content Support

BizInsight now supports co-existence of the current SunGard content pack with additional custom content packs. SunGard clients have the ability to install content packs for additional accounting modules when they become available or create their own custom content using BizNet's Content Architect product (sold separately)

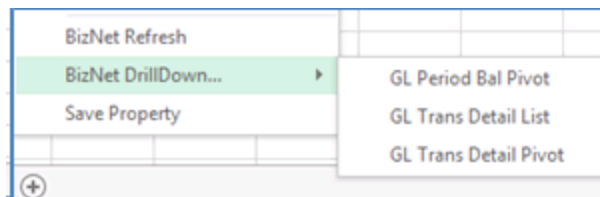
Example of SunGard content merged with the demo BizNet General Ledger content pack:



The drilldown options for any additional content packs that are merged with the Sungard content may have more options than exist for the Sungard EAS content. For example:



Sungard EAS drilldown option



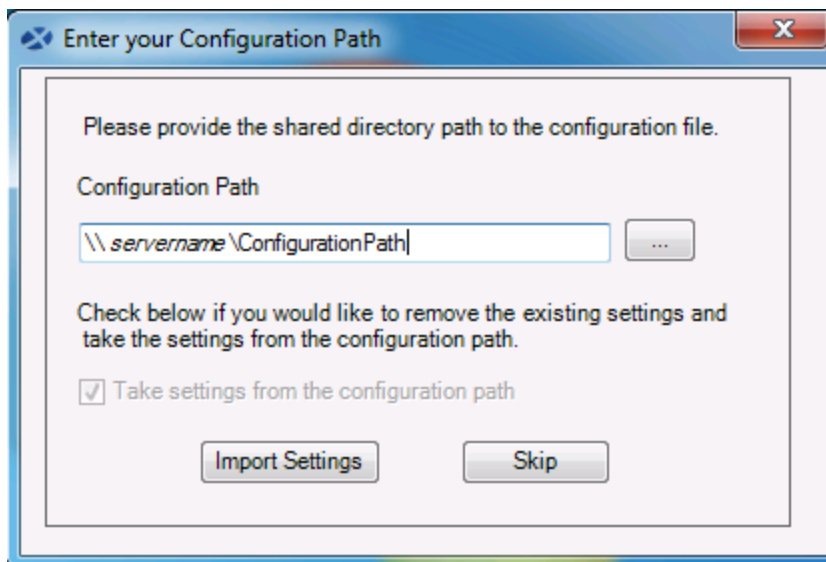
Additional content drilldown

1.2 Installation Support for Centralized Application Settings

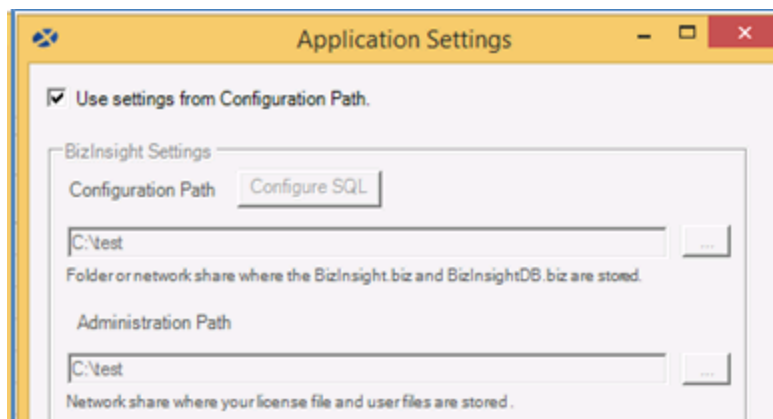
After completing a Content Installer installation and using the Configuration Tool component to generate an application configuration (app.config) file, IT administrators can import the

app.config file during the BizInsight installation. This process allows IT administrators to manage and configure BizInsight without going into the Application Settings dialog. By centrally managing the Application Settings, IT administrators can set generally accepted settings using the Content Installer's Configuration Tool, place the app.config file into the Configuration Path (Shared Directory folder), and every client machine can import the app.config file during installation. In addition, future changes to the app.config file can be consumed using the Scan for Content button on the BizInsight ribbon.

When the Centrally Managed option is used during BizInsight installation, you will be prompted to browse to the directory that contains the app.config file. This directory is the Configuration Path selected during the content installation on the server.

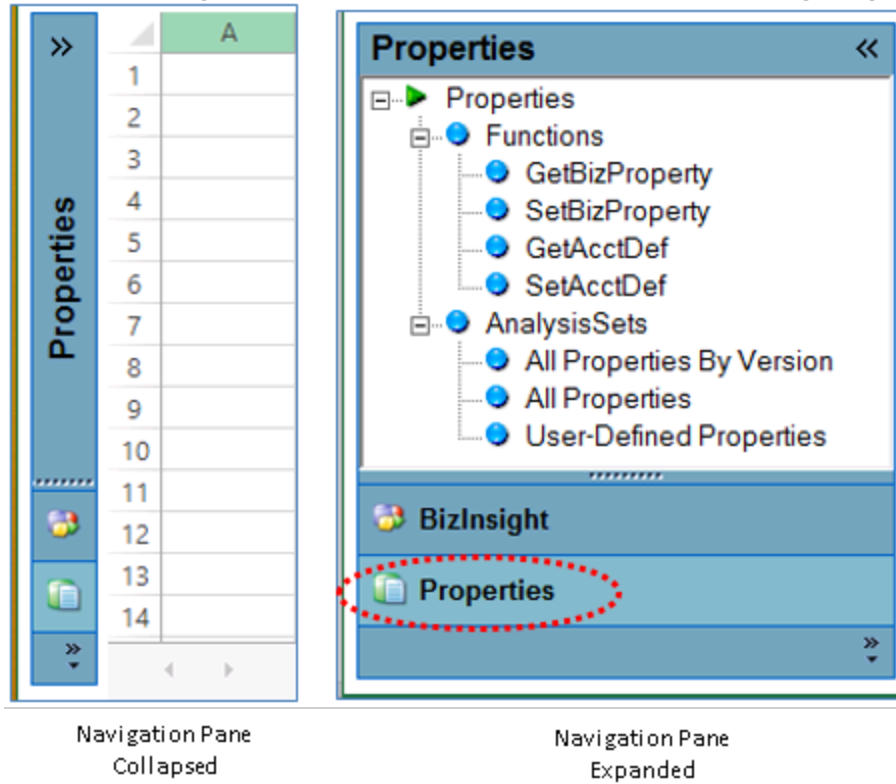


The Application Settings dialog has been updated with a new check box to instruct BizInsight to retrieve the settings from the app.config file located in the Configuration Path. When the Centrally Managed option is selected during BizInsight installation, this checkbox will be automatically checked for the user.

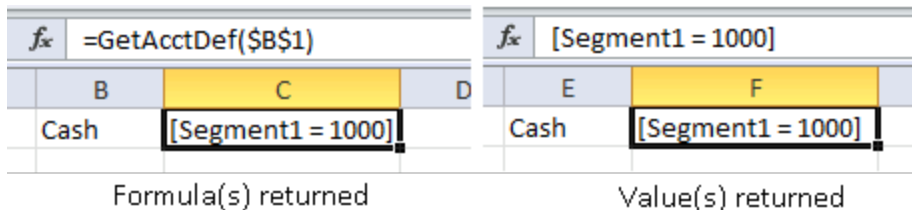
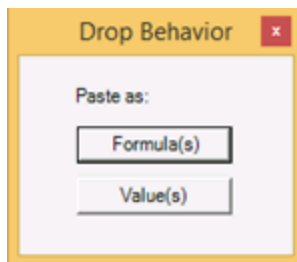


1.3 BizProperty and Account Definition Functions Embedded in the Navigation Pane

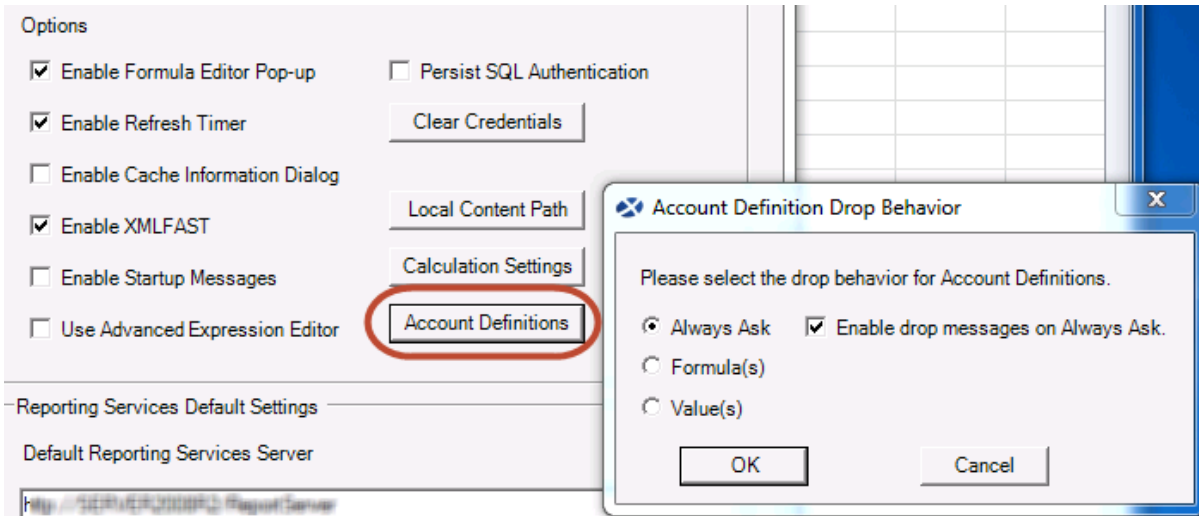
BizProperty and Account Definitions are a built-in set of functions, integrated within BizInsight, that provide an organization the ability to store and retrieve values. In previous BizInsight releases, the functions were not available in the Navigation Pane and users had to remember the names of their stored account definitions and manually add the functions to their BizInsight reports. The BizInsight release provides access to these functions and definitions in the Properties menu and allows the user to drag-and-drop their stored definitions into a worksheet. Users can create new properties on the fly or continue to define and maintain all Properties and User Defined Properties in an Excel workbook. Once defined, all properties are now clearly visible and accessible to all users via the Navigation Pane.



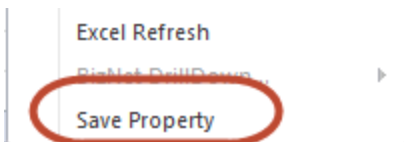
When dragging and dropping a property into an Excel worksheet, users will be prompted to choose whether they want the properties dropped with a live formula (ex. =GetAcctDef) or as values.



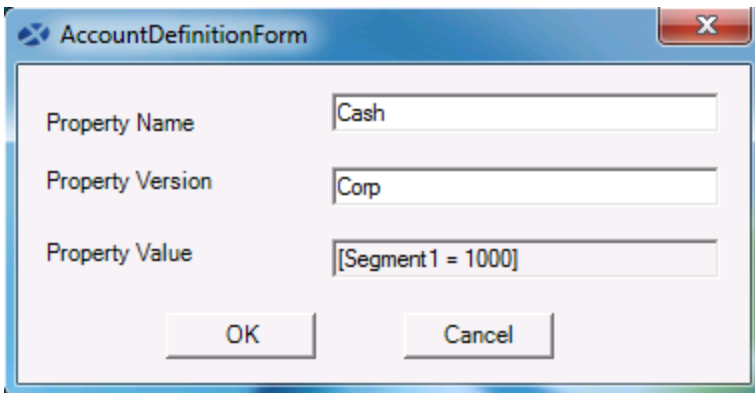
Users can change the default drag and drop behavior in the Application Settings dialog by clicking the Account Definitions button:



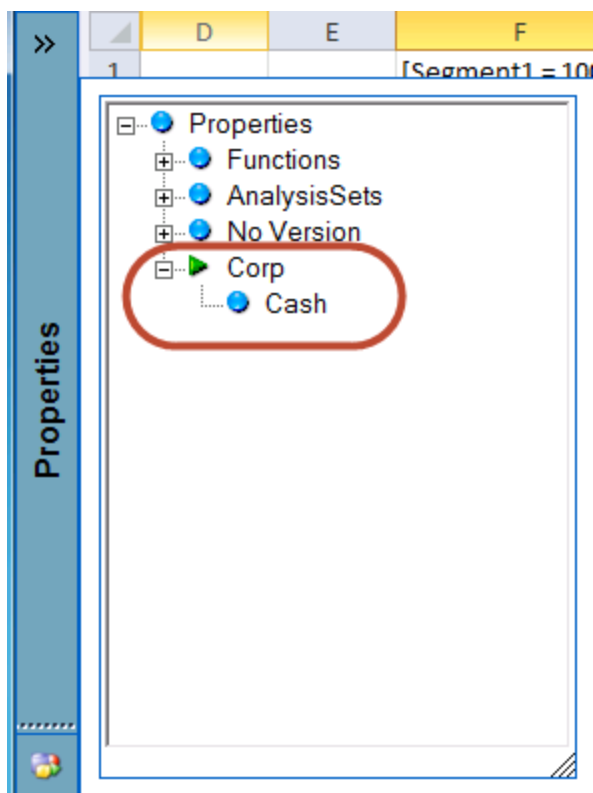
An additional option named "Save Property" has been added to the BizInsight right-click menu to allow users to create properties straight from an Excel workbook:



This option will open a dialog where the user can specify a Property Name and Property Version for the definition and commit that change.



Users can refresh the Properties menu to view the new definition.

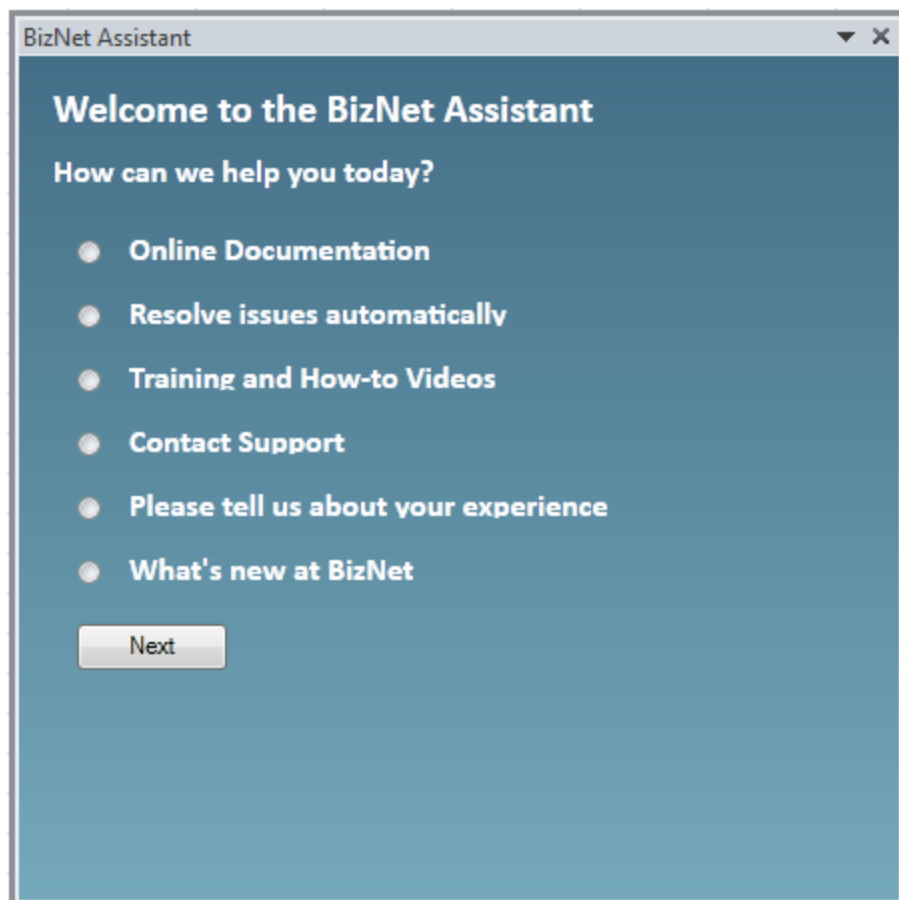
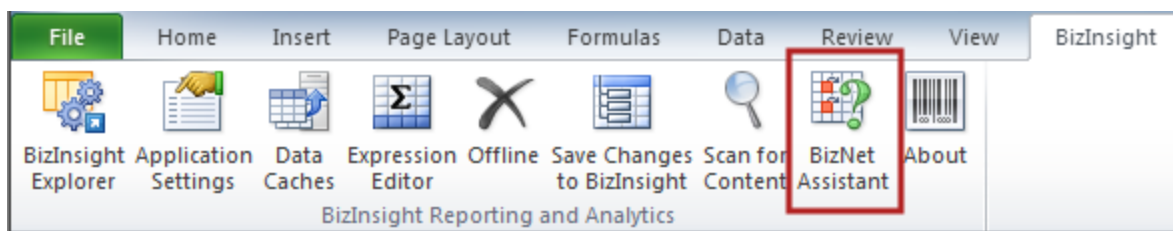


Users can continue to store Account Definitions in a single workbook for centralized maintenance.

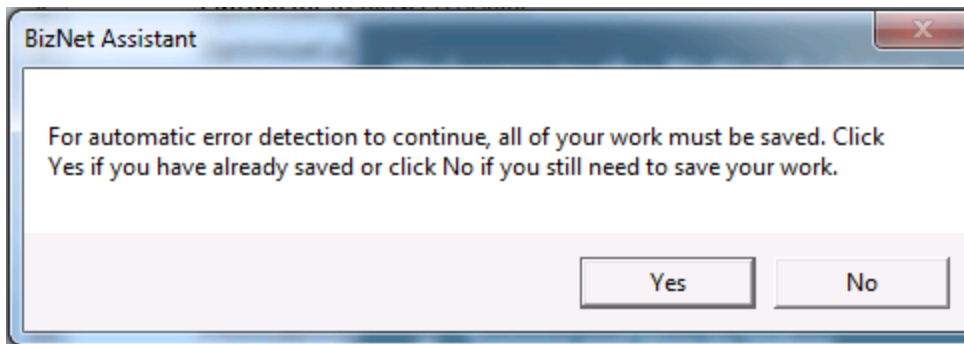
1.4 BizNet Assistant

As a new feature in BizInsight 5.0.35.1, BizNet Assistant is developed from a business commitment to continually improve customer relationships and ensure the needs of our customers are fulfilled in a timely, friendly, and efficient manner. This automated self-service application provides customers access to support and education, and further discussions about the product. Users have access to immediate answers, pertinent information, and error detection to automatically resolve most common issues.

The BizNet Assistant can be accessed from the BizInsight ribbon.



The Resolve Issues automatically radio button will trigger a process that will resolve most #NAME and #VALUE errors for a user. Choosing this option will require a restart of Excel. Users will be given the opportunity to cancel the process and save their work before the process is run:

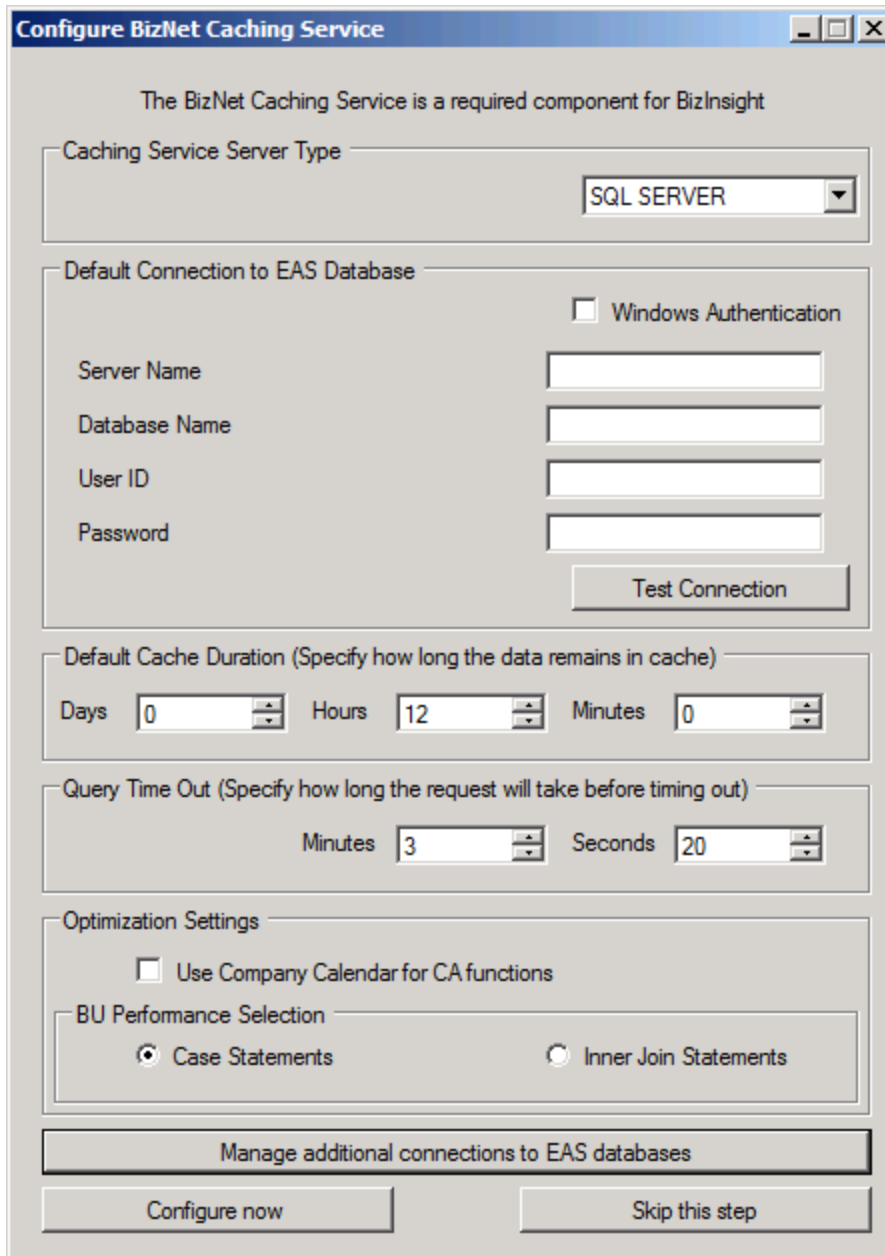


1.5 Multi-thread Support added to BizInsight and BizNet Caching Service

In our product performance discussions, there are many methods to improve report refresh times such as upgrading Excel from 32-bit to 64-bit and adding more memory to the caching service server. The SP3 BizInsight release now utilizes the multiple core processors on both the client and server machines. The multi-thread support in the BizNet Caching Service will increase the processing speed of the SQL queries on the server. On the client workstations, the multi-thread support will reduce the time of the refresh and subsequent refresh requests for the same cached data. Users will notice a significant increase in performance speed if all of the above mentioned optimization practices are implemented.

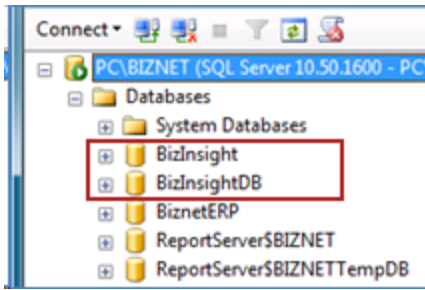
1.6 BizNet Caching Service User Interface

A new interface appears during the installation of the BizNet Caching Service that configures the service config file with the connection type and database credentials. The caching service now supports a query timeout setting in addition to the cache expiration timeout and both timeout settings can be configured using the new User Interface. A new Business Unit setting is included as well to optimize the performance of the BU functions. Refer to the Caching Service installation step of the Installation Guide for information regarding the fields and values to enter in this user interface.

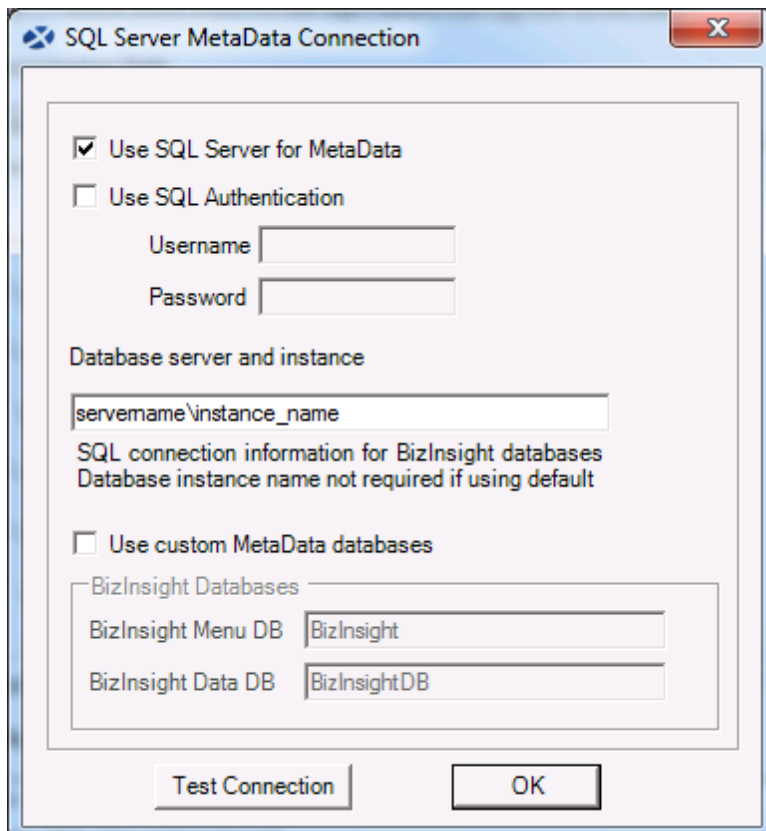
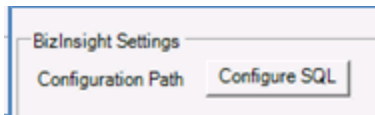


1.7 SQL MetaData Database Support

In previous BizInsight releases, the BizInsight MetaData was stored in .biz files in the shared directory. BizInsight 5.5 SP3 now supports the use of SQL database versions of these MetaData files. The new Content Installer tool that is provided with 5.5 SP3 will automatically deploy the MetaData as databases into SQL Server. This installation change improves product stability when multiple users are connected and improves performance during data retrieval.

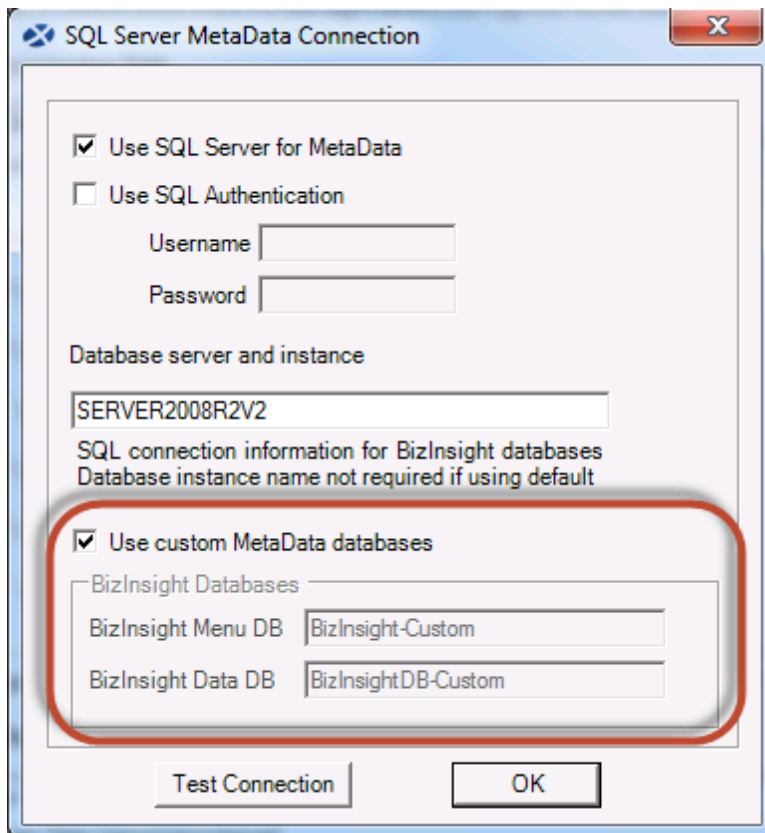


The BizInsight Application Settings dialog contains a new button named "Configure SQL" that will open a dialog in which the server name that hosts the SQL MetaData databases can be provided.

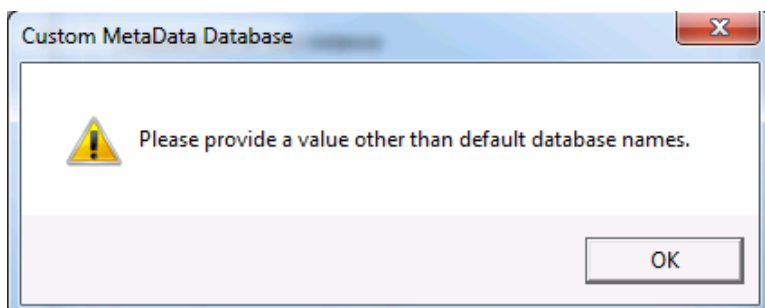


1.8 Support for custom SQL MetaData databases

BizInsight now supports the use of custom SQL MetaData database names. Prior to the 5.5 SP3 RTM3 release, BizInsight would only recognize SQL MetaData databases with the names of BizInsight and BizInsightDB. This constraint precluded the ability to use SQL MetaData databases in a multi-customer hosted environment. The Configure SQL dialog in Application Settings has been re-designed to support the use of custom SQL MetaData databases.



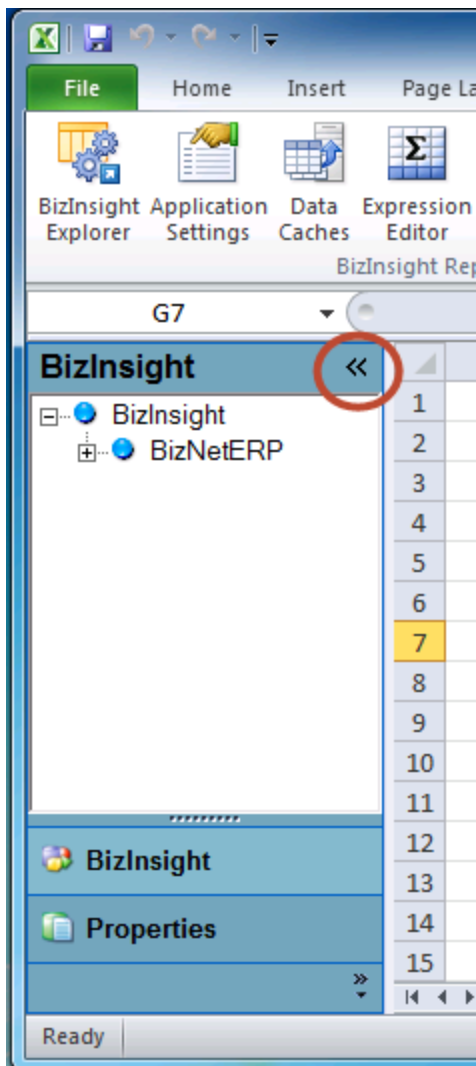
User's will receive a warning message if the Use custom MetaData database checkbox is checked and the database names have not been changed to non-default values.



2. Product Enhancements

2.1 Collapsible BizInsight Navigation Pane

BizInsight 5.5 SP3 replaces the five dots collapsible pane with one that is easier to collapse.

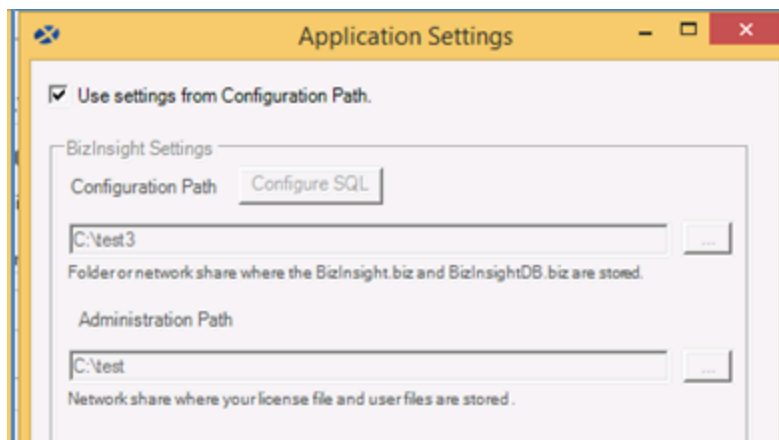


Expanded

In addition to fully expanding the Navigation Pane using the double arrows, the items of the Navigation Pane can remain collapsed and users can temporarily display the nodes with a left click on the Navigation Pane. The temporary display of the nodes of the Navigation Pane will collapse when the user clicks away from the Navigation Pane.

2.2 Application Settings with Automatic Scan for Content

If the Use Settings from Configuration Path checkbox is checked in the Application Settings dialog, the user will receive a Scan for Content prompt. Scan for Content will import new settings and register content add-ins from the Configuration Path. During the process, all open workbooks will need to be closed.



For this option to work, a configured app.config file must exist in the Configuration Path to which BizInsight is pointed.

Improved Oracle Support

The new release improves Caching Service performance for Cost Allocation and Business Unit functions in Oracle environments. Drilldown feature in Oracle is fully supported in BizInsight.

Configure BizNet Caching Service

The BizNet Caching Service is a required component for BizInsight

Caching Service Server Type:

Default Connection to EAS Database

Windows Authentication

Server Name:

Database Name:

User ID:

Password:

Default Cache Duration (Specify how long the data remains in cache)

Days: Hours: Minutes:

Query Time Out (Specify how long the request will take before timing out)

Minutes: Seconds:

Optimization Settings

Use Company Calendar for CA functions

BU Performance Selection

Case Statements Inner Join Statements

3. Issues Resolved

3.1 Unhandled exception thrown in Data Caches

When the Configuration Path folder has missing biz files (Configure SQL connection is disabled), an error will occur when the user clicks on the Data Caches ribbon button.

3.2 Expression Editor Launches in all Workbooks

When a user had multiple workbooks open and then launched the Expression Editor, the Expression Editor would open in all open workbooks. This issue has been resolved and users can open or close the Expression Editor in a workbook without affecting other open workbooks.

4. Known Issues

1. The BizNet caching service can be configured to use Windows authentication to connect to the EAS database but will use the service account credentials and not the end user's credentials.
2. When using F2 to refresh a cell, the cell updates to #VALUE if an error occurs.

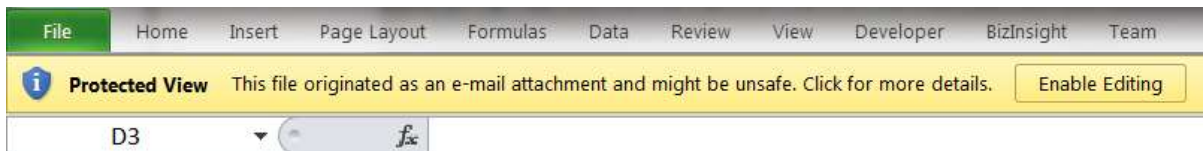
When using F2 to refresh a function, any errors that may occur will not be presented to the user and the cell will update with #VALUE. Go to **About > Support Tools > View Events** to see the cause of the #VALUE.

3. Only applies when using User Managed application settings:

The following is the best practice for initial BizInsight setup and use of the ScanForContent feature:

Install BizInsight > Open Excel > Click BizInsight Explorer ribbon button > Close Excel > Open Excel > Click Application Settings button and configure if needed > Click Scan for Content button > Close all Excel sessions > Open Excel.

4. BizInsight Workbooks requires users to enable Excel Protected View



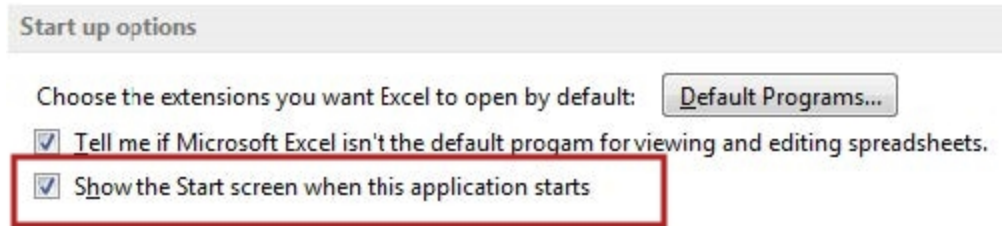
Protected View is a read-only mode where most editing functions are disabled. There are several reasons why a file opens in Protected View.

If you only need to read the workbook, and not edit it, you can remain in Protected View, but without BizInsight features enabled. If you know the workbook is from a trustworthy source, you can save the workbook locally on your computer. After you save it on your computer locally, it becomes a trusted document and BizInsight features will be enabled.

<http://office.microsoft.com/en-us/excel-help/what-is-protected-view-HA010355931.aspx>

5. Microsoft Office Excel 2013 Disable Start Screen Issue

In Excel 2013, a new feature allows users to disable the Excel Start screen.

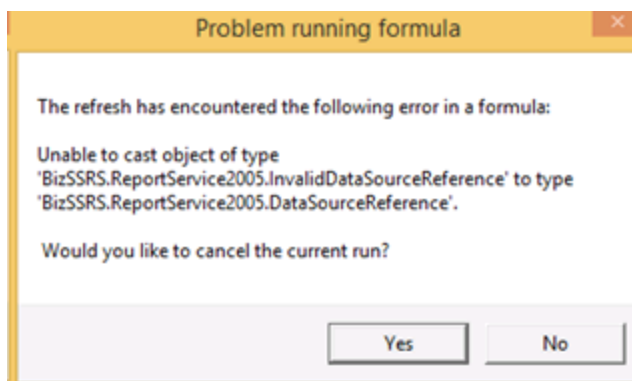


This option causes a different behavior with BizInsight workbooks. If Excel is launched first, regardless of whether BizInsight is loaded on-demand or at start-up, the workbook functions return a #VALUE! BizNet recommends that users who disable their Excel Start Screen open the workbook file first rather than launching the Excel application.

BizInsight Load On-Demand: Open a BizInsight workbook > launch BizInsight > open other BizInsight workbooks

BizInsight Load at Start-Up: Open a BizInsight workbook > open other BizInsight workbooks

6. When a user opens any workbook with Set functions (SetAcctDef or SetBizProperty), the values will be automatically committed to the database. Users can place Excel in manual calculation mode or open the first workbook Offline to prevent the Set functions from executing.
7. Users should maintain separate a workbook for the Set functions (SetAcctDef and SetBizProperty). If a workbook contains both Set and Get (GetAcctDef or GetBizProperty) functions and a BizNet Refresh is performed, the following exception will occur and the Get functions will fail to update.



5. SunGard EAS Content Pack Improvements

5.1 Business Unit (BU) Function Optimization

Significant updates have been made to the SQL queries being used for the BU functions resulting in drastically improved data retrieval times.

5.2 Cost Allocation (CA) Function Optimization

Significant updates have been made to the SQL queries being used for the CA functions resulting in drastically improved data retrieval times. In addition, the new query timeout setting in the Caching Service will help alleviate the report timeout issues.

5.3 Location (LOC) Function Improvement

The LOC functions have been updated to address issues that have been reported regarding inaccurate data being returned by the functions.

5.4 Analysis Sets Updated to TRIM Return Values

Previously, the information analysis sets were returning values with trailing spaces. This new release has updated the analysis set queries to trim trailing spaces from the values being returned.

5.5 Drilldown Performance Improvements

Users had reported performance issues during a function drilldown, in particular Report Class (RC) functions. All drilldown SQL queries have been updated to improve data retrieval times.

5.6 New Source Code Analysis Sets

Two new analysis sets nodes have been included in the BizInsight Analysis Sets section to provide visibility into SunGard EAS source code tables. The Source Code analysis set returns a list of all source codes from the database table. The Source Activity analysis set returns a list of all source codes filtered by year and period. When using the Source Activity analysis set, the year format must be YYYY and the month format must be MM.

(i.e. The value "04" represents the month of April, however, the value "4" is not in the MM format and will not return correctly)

Note Source Code functions are provided as a separate product release and must be purchased separately.

